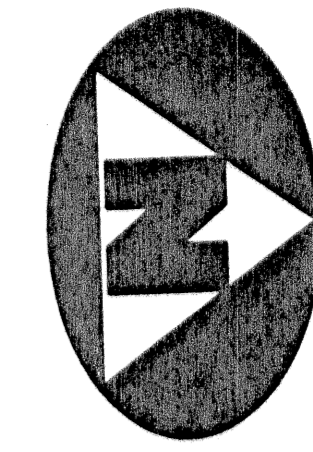
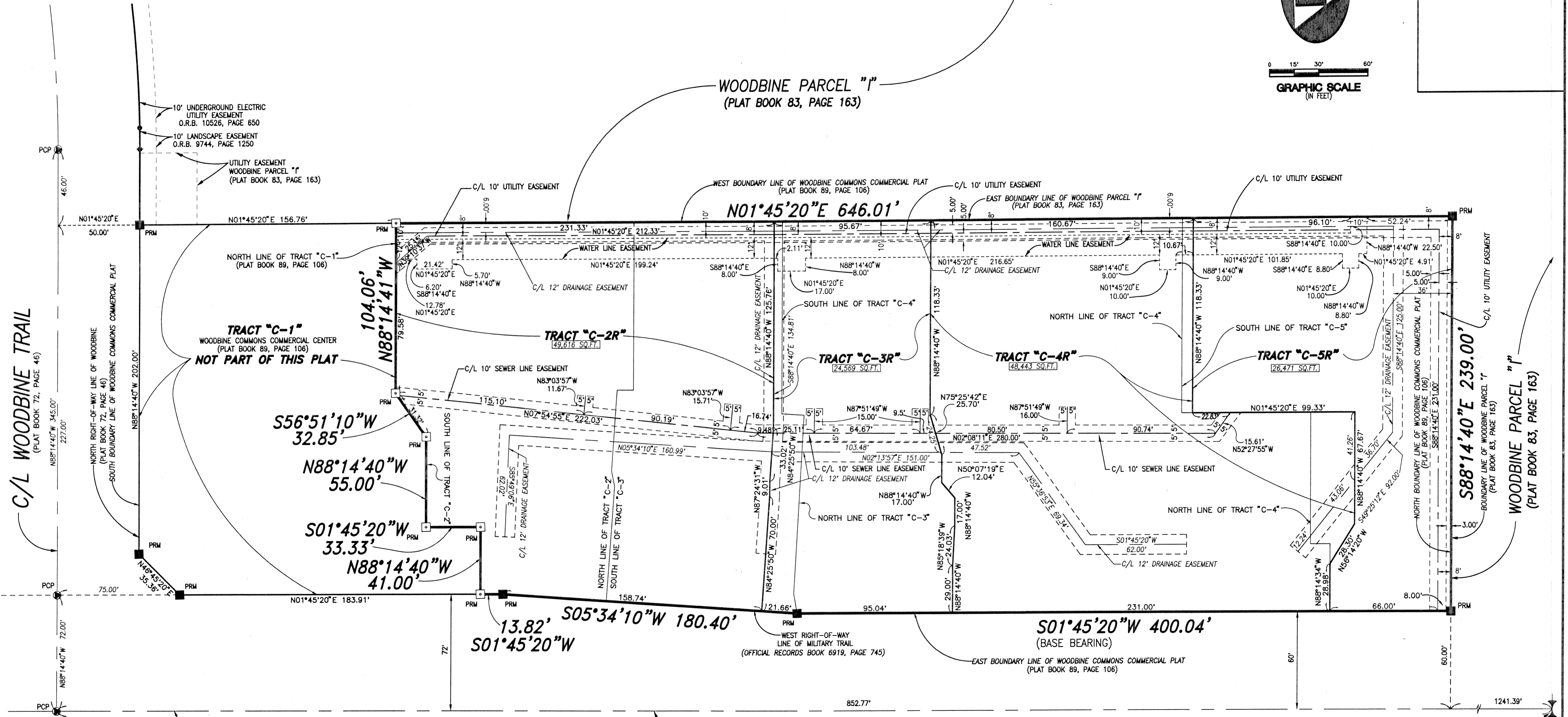


BEING A REPLAT OF, TRACTS "C-2", "C-3", "C-4", AND "C-5" WOODBINE COMMONS COMMERCIAL CENTER, AS RECORDED IN PLAT BOOK 89, PAGE 106, PUBLIC RECORDS, PALM BEACH COUNTY, FLORIDA, AND LYING IN THE NORTHWEST ONE-QUARTER OF SECTION 25, TOWNSHIP 42 SOUTH, RANGE 42 EAST, CITY OF RIVIERA BEACH, PALM BEACH COUNTY, FLORIDA.



GRAPHIC SCALE (IN FEET)



SURVEYOR'S NOTES AND LEGEND:

1. THE BASE BEARING AS SHOWN HEREON IS NORTH 01°45'20" EAST ALONG THE WEST RIGHT-OF-WAY LINE OF MILITARY TRAIL, AS SHOWN HEREON.

- DENOTES A FOUND PERMANENT REFERENCE MONUMENT STAMPED "PRM LB 2171"
- DENOTES A SET PERMANENT REFERENCE MONUMENT STAMPED "PRM LB 2171"
- ⊙ DENOTES A FOUND PERMANENT CONTROL POINT STAMPED "PCP LB 2171"
- DENOTES TRACT CORNER MONUMENT POSITION

O.R.B. = OFFICIAL RECORD BOOK
 C/L DENOTES A CENTERLINE
 SQ.FT. = SQUARE FEET
 CA = CENTRAL ANGLE
 L = LENGTH
 R = RADIUS

SUBDIVISION
 BOOK
 FLOOD ZONE
 QUAD #
 SE
 TAZ
 PUD NAME

THIS INSTRUMENT WAS PREPARED BY WM. R. VAN CAMPEN, P.S.M., IN AND FOR THE OFFICES OF BENCH MARK LAND SURVEYING & MAPPING, INC., 4152 WEST BLUE HERON BOULEVARD, SUITE 121, RIVIERA BEACH, FLORIDA

BENCH MARK LAND SURVEYING & MAPPING, INC.
 4152 W. BLUE HERON BOULEVARD, SUITE 121
 RIVIERA BEACH, FLORIDA 33404
 PHONE: (561) 844-2102 • FAX: (561) 844-2171 • FAX: (561) 844-9659
 EMAIL: bmlsm@aol.com WEB: http://members.aol.com/bmlsm

WOODBINE COMMONS COMMERCIAL CENTER PARTIAL REPLAT			
DWN: MKH	FB	DATE: 8/21/01	WO.#: P11.COMM
CKD: SVC	FILE: REPLAT12-20-02	SCALE: 1" = 30'	SHEET 2 OF 2